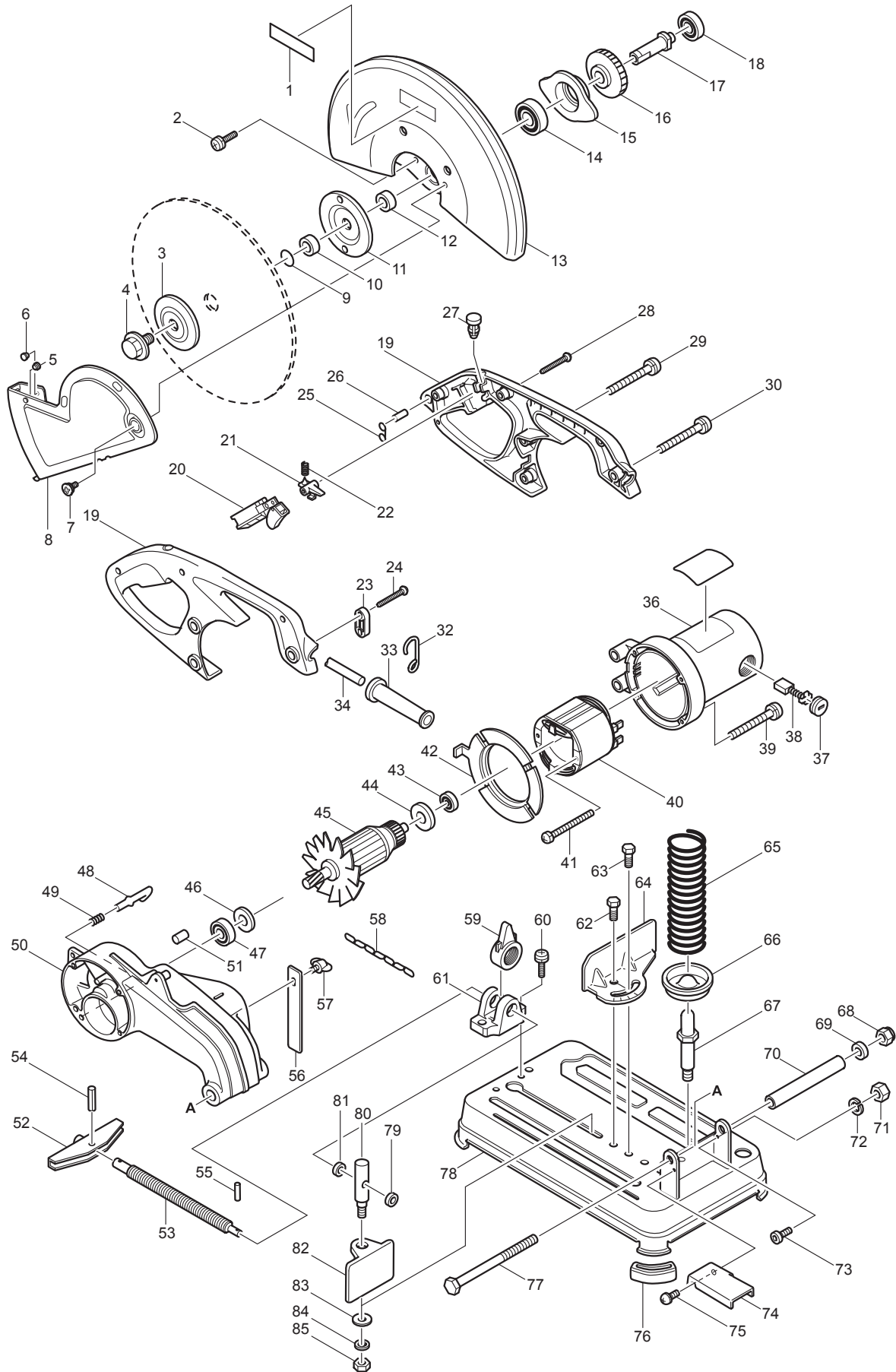




03 - 2010

2414DB

14" CUT-OFF SAW AC/DC



Item No	Type	Ref	Part No	Description	Qty	Unit
1			819064-1	MAKITA MARK	1	PC.
2			911333-7	PAN HEAD SCREW M6X20	4	PC.
3	2		224299-5	* FLANGE 90	1	PC.
4			251680-7	HEX. BOLT M10X25	1	PC.
5			416771-3	PLUG	1	PC.
6			416771-3	PLUG	1	PC.
7	2		265121-7	+ FLAT HEAD SCREW H6	1	PC.
8			150515-8	SAFETY GUIDE COMPLETE	1	PC.
9			213162-7	O RING 14	1	PC.
10			257185-5	ADAPTOR RING 17	1	PC.
11			224299-5	FLANGE 90	1	PC.
12			257185-5	RING 17	1	PC.
13			165126-6	SAFETY COVER	1	PC.
14			211256-2	BALL BEARING 6203LLB	1	PC.
15			316527-3	BEARING BOX	1	PC.
16			226415-5	HELICAL GEAR 41	1	PC.
17			322633-4	SPINDLE	1	PC.
18			211064-1	BALL BEARING 6000	1	PC.
19			183058-5	HANDLE SET	1	PC.
20			651131-4	SWITCH C3D-15MS	1	PC.
21			416793-3	SWITCH LOCK	1	PC.
22			231397-8	COMPRESSION SPRING 4	1	PC.
23			687052-4	STRAIN RELIEF	1	PC.
24			265995-6	TAPPING SCREW 4X18	2	PC.
25			281207-9	HANGER	1	PC.
26			256012-3	PIN 6	1	PC.
27	2		417113-4	* SWITCH BUTTON	1	PC.
28			265995-6	TAPPING SCREW 4X18	4	PC.
29			911273-9	PAN HEAD SCREW M5X50	2	PC.
30			911258-5	PAN HEAD SCREW M5X35	1	PC.
32			322049-3	HOOK	1	PC.
33			682505-8	CORD GUARD 10-90	1	PC.
34			664463-0	CORD W/PLUG 2P-14-2.5M, SJ	1	PC.
36			159750-5	MOTOR HOUSING COMPLETE	1	PC.
		INC.	632486-6	SUPPORT UNIT	1	PC.
		INC.	643707-1	BRUSH HOLDER	2	PC.
37			643700-5	BRUSH HOLDER CAP 7-18	2	PC.
38	2		194991-6	CARBON BRUSH CB-203 2PC/SET W/ ORIGIN	1	PC.
39			911273-9	PAN HEAD SCREW M5X50	4	PC.
40			636006-8	FIELD 115V	1	PC.
41			266059-9	TAPPING SCREW 5X75	2	PC.
42			415369-3	BAFFLE PLATE	1	PC.
43	3		210042-8	BALL BEARING 629LLB (OLD# 211056-0)	1	PC.
44			681633-6	INSULATION WASHER	1	PC.
45			516561-5	ARMATURE ASS'Y 115V	1	PC.
		INC.	241515-0	FAN 92	1	PC.
		INC.		Item No. 43,44,46,47		
46			267714-6	WASHER 15	1	PC.
47			211228-7	BALL BEARING 6202DDW	1	PC.
48			322665-1	STOPPER	1	PC.
49			231240-1	COMPRESSION SPRING 7	1	PC.
50			150916-0	GEAR HOUSING COMPLETE	1	PC.
		INC.		Item No. 51		
51			263005-3	RUBBER PIN 6	1	PC.

Item No	Type	Ref	Part No	Description	Qty	Unit
52			272021-4	HANDLE 120	1	PC.
53			322239-8	VICE SCREW	1	PC.
54			951163-4	SPRING PIN 5-20	1	PC.
55			951066-2	SPRING PIN 3-18	1	PC.
56			344089-1	STOPPER PLATE	1	PC.
57			251887-5	SCREW M6X10	1	PC.
58	2		282016-9	* CHAIN (10 RINGS)	1	PC.
59			322209-7	VICE NUT	1	PC.
60			911451-1	PAN HEAD SCREW M8X30	2	PC.
61			311949-2	SCREW GUIDE	1	PC.
62			265201-9	HEX. BOLT M10X25	1	PC.
63			265201-9	HEX. BOLT M10X25	1	PC.
64			344087-5	GUIDE PLATE	1	PC.
65			233085-3	COMPRESSION SPRING 45	1	PC.
66			165066-8	SPRING HOLDER	1	PC.
67			265407-9	HEX.BOLT M10	1	PC.
68			252130-5	HEX. LOCK NUT M10-17	1	PC.
69			267713-8	CUP WASHER 10	2	PC.
70			331428-4	PIN 16-113	1	PC.
71			931302-2	HEX. NUT M6	1	PC.
72			942151-2	SPRING WASHER 6	1	PC.
73			922312-0	HEX. SOCKET HEAD BOLT M6X12	1	PC.
74			344712-8	SPARK GUARD	1	PC.
75			911308-6	PAN HEAD SCREW M6X10	1	PC.
76			421487-7	CUSHION	4	PC.
77			265406-1	HEX. BOLT M10X130	1	PC.
78			135039-5	* BASE	1	PC.
79			253731-2	FLAT WASHER 8	1	PC.
80			321680-2	SCREW M8	1	PC.
81			253731-2	FLAT WASHER 8	1	PC.
82			342679-4	WISE PLATE	1	PC.
83			253752-4	FLAT WASHER 8	1	PC.
84			942201-3	SPRING WASHER 8	1	PC.
85			931402-8	HEX. NUT M8	1	PC.
86			253903-9	* WAVE WASHER 6 (Added)	1	PC.
87			922323-5	* HEX.SOCKET HEAD BOLT M6X16	1	PC.
100			652014-1	P.H. SCREW M4 X 8 (F/SWITCH)	4	PC.
101			654002-4	EYE TERMINAL 1.25-M4 (F/SWITCH)	2	PC.
102			654005-8	TERMINAL 2-M4 (F/SWITCH)	2	PC.



ACCESSORIES

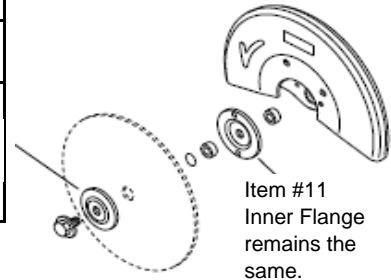
- See catalogue or visit www.makita.ca for optional accessories -

A01			782210-8	SOCKET WRENCH 17	1	PC.
A02			A-90168	14" CUT-OFF WHEEL A36PBF 5/PK	1	PC.
A03			411478-6	* SWITCH BUTTON (Old)	2	PC.
A04			134548-1	QUICK VICE ASSY	1	PC.

SERVICE CHANGES

1. Changes on Flange

Item No.	Description	Type 1	Type 2
3	Outer Flange 90 / Flange 90	224300-6	224299-5
			 it is also used as inner flange



Above parts are completely interchangeable as a set.

2. Changes on Change on Base and Chain

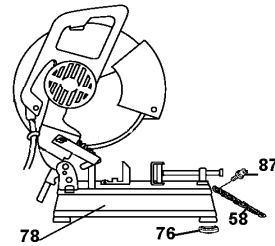
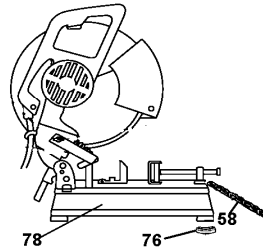
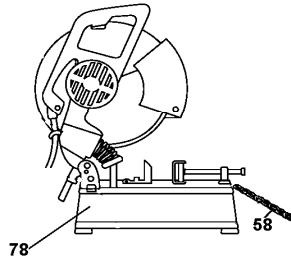
Item No.	Description	Type 1	Type 2	Type 3
58	Chain	282010-1		282016-9
78	Base	165230-1	134917-6	135039-5
		comes with 4pc.of 922331-6 H.S.H. Bolt M6x20	comes with 4pc.of 922331-6 H.S.H. Bolt M6x20 & Item No,76	comes with 4pc.of 922331-6 H.S.H. Bolt M6x20 & Item No 76
87	H.S.H.Bolt M6x16	-----		922323-5

Above parts are completely interchangeable as a set.

Type 1

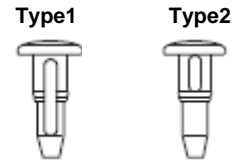
Type 2

Type 3



3. Changes on Switch button

Item No.	Description	Type 1	Type 2
27	Switch Button	411478-6	417113-4
A03	Switch Button	411478-6	-----



4. Addition of Washer

Item No.	Description	Type 1	Type 2
86	Wave Washer 6	-----	253903-9

